



250 SE Timber Avenue, Redmond, Oregon 97756 Phone 541 923-2233 Fax 541 923-2255

## SERVICE BULLETIN

**SB016-0025**

Subject: Main Gear Door Hinge Service Issue

Date: October 19, 2015

Ref: Chapter 9

Status: **Mandatory**

### Subject:

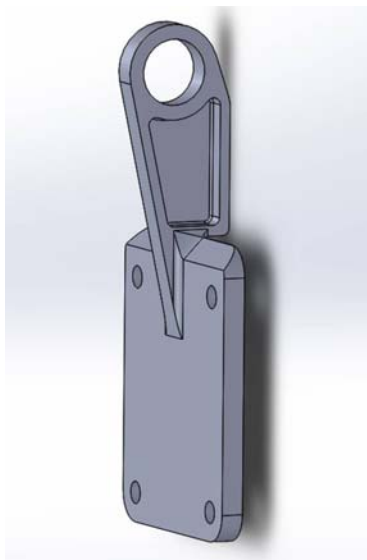
Evolution Main Landing Gear Hinge & Bolt Replacement

### Background:

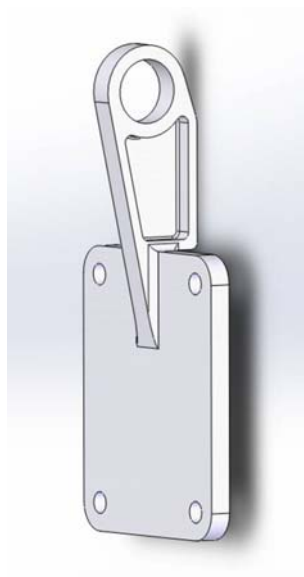
The hinge(s) connecting the main gear door on some Lancair Evolution aircraft have been shown to crack, warp or fail. This can result in issues with the main gear door function. Some aircraft have also experienced issues with the AN3 bolts which attach the gear door lower link to the main landing gear trunnion. Lancair has redesigned the gear door hinges to add greater strength margins in addition to specifying a stronger bolt for the link. These four hinges are to be replaced on all Evolution main gear doors.

### Action:

The main landing gear hinge has had two versions with different hole locations. You will need to determine which hinge is currently installed. Below are pictures of the two hinges that are currently in service. Please compare these pictures to the hinge on your aircraft. Replace the small link-to-trunnion attach bolt on each gear leg as well.



Picture 1



Picture 2

Picture 1 shows a chamfer at the end of the hinge, whereas Picture 2 shows a square edge. Once you identify the hinge needed, please contact Lancair at 541-923-2244 and ask for our parts department to order the proper hinge & bolts.

Part Number and Description		Quantity
Picture 1	150-0027 Hinge Inboard Main Landing Gear Door, Chamfer	4
Picture 2	150-0027C Hinge Inboard Main Landing Gear Door, Square	4
	101-0251 Bolt, Main Landing Gear Door to Trunnion Linkage Ref. 9-10 Rev 4	2

Parts for this service bulletin will be sent **at no charge** until March 31, 2016 after which a charge for the parts will apply.